

**Course Title:** Close Quarters Combat (CQC)

**Course Goal:** Students will conduct basic movement as a stack, basic room entries, and effective communication between officers to solidify the foundations of Close Quarters Combat

Instructions will occur at the MCSO Tactical House.

**Audience:** Santa Cruz County Sheriff's Office SWAT Team Members

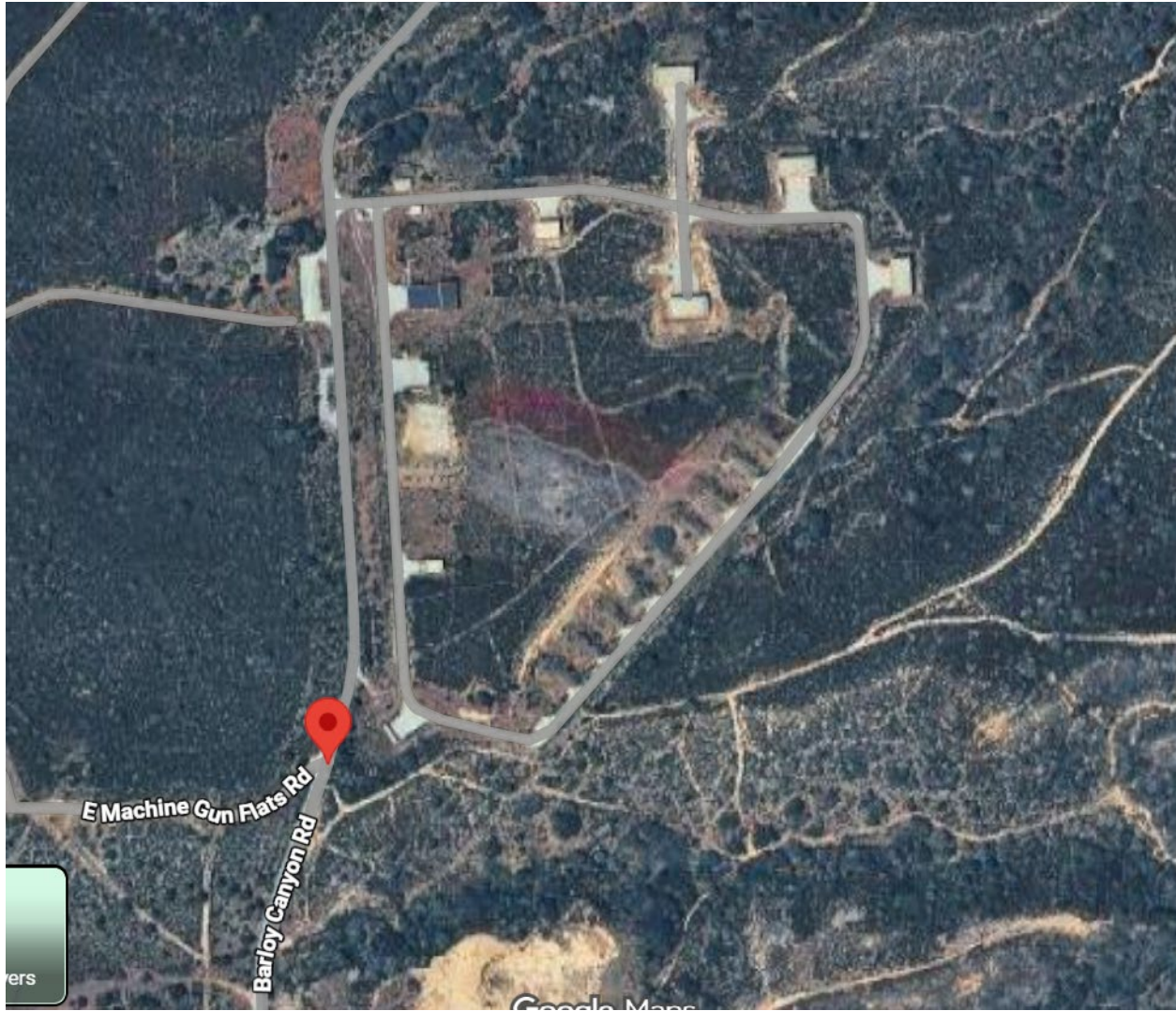
**Core Competencies:** Same as Course Goal

**Date** Tuesday, 05/19/2026

**Total Hours of Instruction:** 0800 – 1700 hours

0800 – 0830: Pre Brief, Housekeeping, Safety check  
0830 – 0900: Movement from LCC to Breach Point  
0900 – 0930: Stacking, DD deployment  
0930 – 1100: Basic Room Entries, Communication  
1100 – 1200: Hallways, intersections, stairs  
1200 – 1300: Lunch  
1300 – 1400: Flow Drills  
1400 – 1630: Start to finish run-throughs  
1630 – 1700: Breakdown, Cleanup, Debrief

**Location:** Monterey County SO Tactical House – Salinas CA 93908



**Instructors:** Eddie Moran, Nic Gregory, Hunter Gaither

**AAR** Nic Gregory

**Mandated Training** No

**Method of Presentation:** Instruction / Practical Application

### **Course Objectives**

Under the supervision of assigned instructors each student will:

- Demonstrate an understanding of basic close quarter combat concepts.
- Demonstrate the ability to effectively move as a team from cover to the target.

- Demonstrate the ability to safely and effectively enter and dominate a room.
- Demonstrate the ability to safely and effectively clear a hallway, and stairs
- Demonstrate trust in fellow operators.

**A.** Natividad Medical Center

- AMR or personal vehicle for injuries requiring medical attention.
  - P: AMR CASEVAC to NMC
  - A: Self Evac to NMC

**B.** Basic First Aid Discussion

- Hydration
- Immediate trauma mitigation for Heat Stroke or Heat Exhaustion

**C.** Identify Safety Officer

- On-scene medics
- 9-1-1 contact
- AMR contact

**D.** Discussion of pre-existing injuries / Reporting of Injuries

**E.** Notification of Netcom prior to training day

- E. Moran

**F.** Rules of Safety and Conduct

1. All firearms are considered loaded all of the time – know the status of your weapon at all times.
2. Don't flag your weapon on anything you are not willing to destroy
3. Keep your finger off the trigger until your sights are on target and you have made a conscious decision to fire
4. Be aware of your target, backstop, and what is to the left and right flank of your target and beyond

**1-1 Orientation / Instructor / Overview**

**A.** Class Orientation

1. Instructor introductions
  - a. Course Outline / Overview

- b. Breaks / Meals
- c. Ratio of instructors to students: 1 Instructor / 5 students

## 1-2 Use of Force Policy Review

### Review of Santa Cruz Sheriff's Office Lexipol use of force policy 300

1. **Deadly force** - Force reasonably anticipated and intended to create a substantial likelihood of causing death or very serious injury.
2. A deputy may use deadly force to protect him/herself or others from what he/she reasonably believes is an imminent threat of death or serious bodily injury to the deputy or another person.
3. A deputy may use deadly force to apprehend a fleeing person for any felony that threatened or resulted in death or serious bodily injury, if the deputy reasonably believes that the person will cause death or serious bodily injury to another unless immediately apprehended. Where feasible, the deputy shall, prior to the use of force, make reasonable efforts to identify themselves as a peace officer and to warn that deadly force may be used, unless the deputy has objectively reasonable grounds to believe the person is aware of those facts.
4. Deputies shall not use deadly force against a person based on the danger that person poses to him/herself, if an objectively reasonable deputy would believe the person does not pose an imminent threat of death or serious bodily injury to the deputy or to another person (Penal Code § 835a).
5. An "imminent" threat of death or serious bodily injury exists when, based on the totality of the circumstances, a reasonable deputy in the same situation would believe that a person has the present ability, opportunity, and apparent intent to immediately cause death or serious bodily injury to the deputy or another person. A deputy's subjective fear of future harm alone is insufficient as an imminent threat. An imminent threat is one that from appearances is reasonably believed to require instant attention (Penal Code § 835a)

## 1-3 Demonstration of Knowledge

- A. At the conclusion of the training each operator will demonstrate proficiency in techniques taught.
  1. Basic movements in a stack
  2. Basic Room Entries within close quarters
  3. Effective Communication with other operators

## 1-4 Required Training Materials

- A. Assigned Glock 47 handgun and AR15 Rifle
- B. Eye and ear protection
- C. All approved/assigned SWAT gear

#### **1-5 Movement from LCC to Breach Point.**

- Understanding the difference between Cover / Concealment
- Different stack movements
- Avenues of Approach
- Use of Shield / No shield
- Bounding

#### **1-6 Stacking, DD Deployment**

- Recognize foundation of structure, and identify stack position of entry team on the move
- Recognize type of doorway, and the path of least resistance prior to entry
- Demonstrate effective placement of DD deployment in a doorway

#### **1-7 Basic Room Entries, Communication**

- Pre-entry room scan
- Path of least resistance
- Crossover / button hook entries
- Points of domination
- Effective communication between operators

#### **1-8 Hallways, Intersections, Stairs**

- Maintaining security within hallways while entering rooms
- X intersections
- T intersections
- Dominating stairs (upstairs and downstairs)

#### **1-9 Flow Drills, and Run-throughs**

- Repetitions

#### **1-10 Range Clean-up**

- A. All student and instructor equipment will be secured
- B. Equipment will be removed from the range
- B. Any equipment left behind will be handed over to the Lead Instructor for the training day to be returned to the owner

**2-1 Debrief**